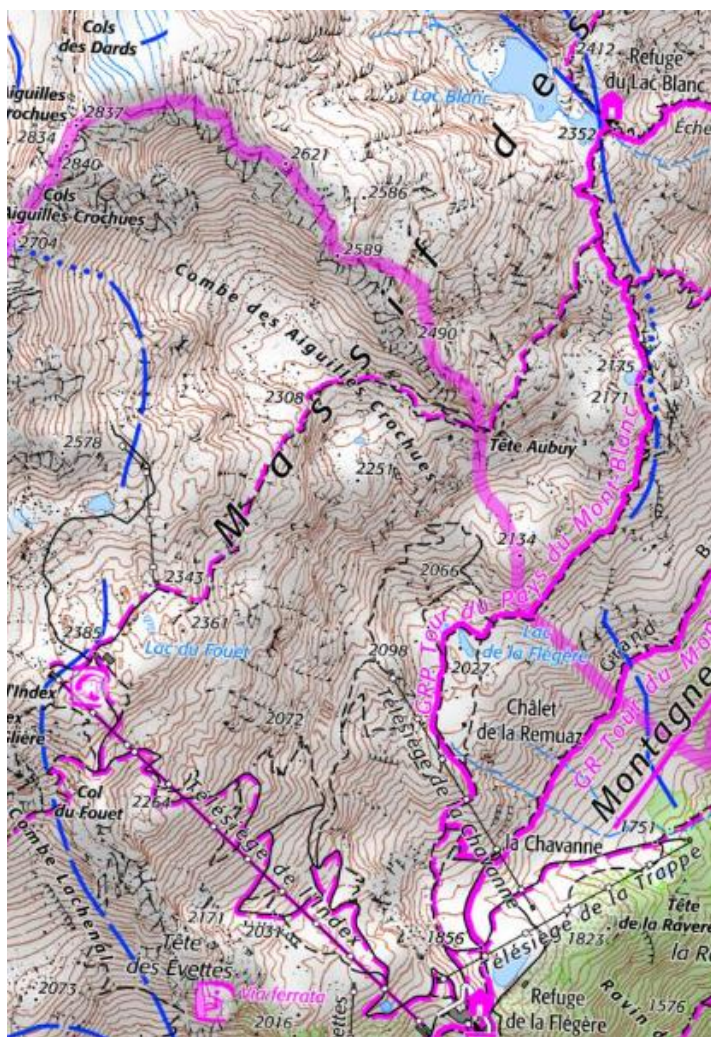


INTERNATIONAL SKI CLUB OF GENEVA

LAC BLANC – FACILE/MOYEN - HAUTE SAVOIE SUNDAY 2025 JULY 20

We take the cable car to Flégère (1856), where we have a coffee. (If snow allows, we will start hiking at the Index chairlift.) We take the rocky, crowded trail to Lac Blanc, which has stunning views of Mont Blanc and the Mer de Glace, arguably the most impressive view in the Alps. We have a picnic or eat at the refuge. Leaving the crowd behind, we walk completely around the lake (if possible because of snow). We descend to Flégère and take the cable car.



Inscription: Thursday July 17 or before by email at bill_larson@bluewin.ch

I need to know:

- Your first and last name
- Do you have a car? If so, how many can it hold, **including yourself?**
- An email address you can read on the weekend
- Your mobile phone number
- **If I don't know you**, are you fit enough to hike for 4 hours? (Please give evidence of your recent hiking experience.)
- Are you a SCIG member? FYI: Membership is June 1 to May 31.

To Bring: To bring: **good hiking boots** (we might be in the snow), water, warm clothing, hat, picnic (optional - the Refuge du Lac Blanc **serves simple food**. **It does not take credit cards**), collapsible ski poles (optional), sunscreen, sunglasses, visa if needed, and **Euros** (The hike is in France.)

Rendezvous:

Time: at 8:15 for an 8:30 departure

Place: Parking near the Salle Communale de Chêne-Bougeries; 1, route du Vallon.

By car: take the Route de Chêne towards Chamonix. Following the signs for Chamonix, turn right onto Route du Vallon. The parking area is on the left in about 200 m.

By tram: take tram 12. Get off at Grange-Falquet. Walk 200 m further; turn right onto Route du Vallon. The parking area is on the left in about 200 m.

Price: About 62 CHF consisting of:
CHF 5 club tax (CHF 15 for non-members.)
Plus 24 € for the cable car.
Plus 35 CHF to be paid per person directly to the driver.
(162 km), who pays for the motorway tolls (about 13.40 CHF round trip)

Maximum participation: 20 persons

Maximum altitude: 2352 m

Elevation gain & loss: ±500 m

Distance: 8 km; **Walking time:** About 4 hours

Transport: private cars and cable car (*last descent from Flégère 18:00*)

Leader: Bill Larson 079 373 4686, email: bill_larson@bluewin.ch

Confirmation or cancelation of the hike: If the weather is bad, we will cancel. Midday before the hike, I will send an email to confirm or cancel.

Advice to drivers: Take the autoroute to Chamonix, continue 5 minutes towards Martigny to the cable car station at les Praz de Chamonix. Driving time 56 minutes, 81 km.



- *By registering, you agree that you are fit for this level of hike and/or that you have previously participated in a similar hike with SCIG.*
- *By registering, you confirm that you carry insurance against accidents and mountain rescue, including helicopter rescue operations. (See REGA: <https://www.rega.ch/en/home.aspx>) Check with your employer to see if you are properly insured.*
- *The hike leader and SCIG disclaim all liability for accidents related to this hike.*