

INTERNATIONAL SKI CLUB OF GENEVA

ALLALINHORN (4027 m)

SATURDAY-SUNDAY - 2021 AUGUST 28-29

VALAIS - EASY ALPINISM



Saturday, we take the train & bus to Saas Fee, quickly check into our hotel, pick up our lift/bus pass, take the lift to Felskinn (2989), cross an icefield to the Britannia hut (3028), have lunch with great views of the high Alps, climb Klein Allalin (3070), descend across two glaciers to the Mattmark dam (2195), take a bus to Saas Fee & rent gear (if needed). Sunday, we take the lift to Mittelallalin (3456). With a professional guide we ascend the Fee Glacier to the summit of the Allalinhorn with stunning views of the high Alps. *This is an excellent choice for your first 4000er!*



Please pay 300 CHF to my UBS account before August 18 to reserve your place.

IBAN:CH65 0027 9279 C710 9135 0; **please include your NAME and "Allalinhorn"**

I need to know:

- 1) Your first and last name.
- 2) Your email address.
- 3) Your mobile phone number.
- 4) Evidence of recent mountain experience.
- 5) Do you have 1) crampons with antibotts, 2) a climbing harness & 3) collapsible hiking pole(s)?
- 6) Are you an International Ski Club of Geneva member?
- 7) Do you have an AG?

Leader: Bill Larson: 079 373 4686; bill_larson@bluewin.ch

Inscription: by email (**not text**) before August 18 to bill_larson@bluewin.ch

Maximum number of participants: 12

Rendezvous: **Saturday August 28 at 6:20 at Cornavin train station** on platform 4. Take the **second car from the back of the train. 6:29 departure.** Bill will board in Nyon at 6:44.



To Bring: ankle high hiking boots that will take crampons, **crampons with antibott (obligatory), climbing harness** (boudrier), gaiters (guêtres) (optional), 1 or 2 collapsible hiking poles with large baskets (batons), hat, gloves, warm coat, hiking pants, rain gear, sunscreen, sunglasses (or glacier glasses), water, snacks, masks.

Price: about 360 CHF, including SCIG fee, hotel, lifts & buses in Saas Fee area, breakfast, & guide (assuming 12 participants). **Plus:** roundtrip train & bus to Saas Fee 1/2 price 78.40 CHF; full price 156.80 CHF, plus 20 CHF for non-members.

Buy your train tickets

individually before departure: Geneva to Saas-Fee, Busterminal roundtrip

Lodging: Hotel Les Amis, 15 Obere Dorfstrasse, 027 530 5015, <https://www.lesamis-saas-fee.ch/>



Station	Time	Platform	Travel	Comments
Genève Visp	dep 06:29 arr 08:53	4 5	IR 90	InterRegio 90 1709 Direction: Brig
Visp Visp, Bahnhof Süd			walk	4 min
Visp, Bahnhof Süd Saas-Fee, Busterminal	dep 09:14 arr 10:04	A D	B 511	



Transport: Train, bus and cable car

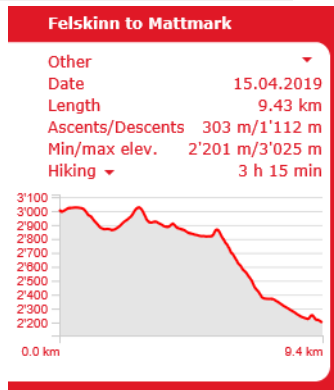
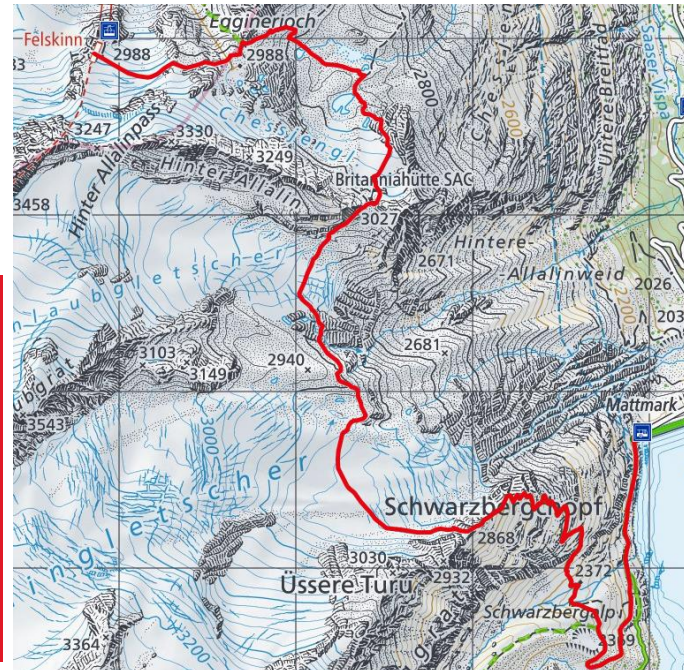
	Day 1	Day 2
Maximum altitude (m):	3025	4027
Elevation gain (m):	300	600
Elevation loss (m):	1100	600
Walking time (hr):	About 4	about 4

Saturday we will go to our hotel & drop stuff. Please pack the stuff to drop **in a separate bag**. We do not have time for packing & repacking.

Sunday: 6:30 breakfast (Bring your packs to breakfast), 7:30 meet guides at Alpin Express. We can leave some of our stuff in the hotel and pick them up on the way back. We can have lunch after the hike at Mittelallalin. Bring a snack to eat at the summit.

Return from Saas Fee to Geneva: Buses at xx:22 & xx:52 - 4 hours

Mattmark	dep 16:28	0:40	1	B 513, B 511
Saas-Fee, Busterminal	arr 17:04			
Mattmark	dep 17:26	0:42	1	B 513, B 511
Saas-Fee, Busterminal	arr 18:04			



- By registering, you agree that you are fit for this level of hike and/or that you have previously participated in a difficult hike with the SCIG.
- By registering, you confirm that you carry insurance against accidents and mountain rescue, including helicopter rescue. (For example REGA: <https://www.rega.ch/en/home.aspx>) Check with your employer to see if you are properly insured. *The Hike Leader and the SCIG disclaim any and all liability for accidents related to this hike.*