

INTERNATIONAL SKI CLUB OF GENEVA

KANDERFIRN & LÖTSCHEPASS - DIFFICILE

SATURDAY-SUNDAY, AUGUST 14-15

CANTON BERN TO VALAIS

Saturday from Selden we walk, crossing boulderfields and with cables, up to a view of the Kanderfirn glacier. Sunday from Selden we switchback steeply up meadows to the Lötsche Glacier. We walk a 1 km long trail across this flat, crevasse-free glacier, marked with orange poles. We do easy rock scrambling to the Lötschepass hut (027 939 1981), where we have lunch, surrounded by snow, ice, stones and towering cliffs with excellent views of the high peaks of the Valais Alps. We walk down to Lauchernalp (Huppä) & take a lift down.

Inscription: by email not SMS to bill_larson@bluewin.ch by August 4

Please pay 100 CHF to my UBS account to reserve your place.

IBAN:CH65 0027 9279 C710 9135 0; please include your **NAME** and "**Kanderfirn**".

I need to know:

- Your full name
- Your email address
- Your mobile phone number
- Are you a SCIG member?
- Are you fit enough to walk for 7 hours up 1200 meters at normal speed? Evidence of your recent mountain experience?



Maximum:

12 participants

Rendezvous:

Genève gare 7:30 platform 6 for a 7:42 departure; board the **second car from the back of the train**. Bill will board in Lausanne at 18:18.

To Bring: boots, hat, water, picnic lunch for Saturday, sweater, rain gear, sunscreen, sunglasses, change of clothes, toiletries, masks. (Optional: ankle high boots, since we cross a boulder field, gloves, since we will use cables, collapsible hiking poles)

Price 117 CHF for hotel including dinner & breakfast & club fee (plus 20 CHF for non-members) Plus, train tickets 89.20 CHF ½ price 165.40 CHF full price. Or buy a Supersaver ticket or a Saver Day Pass. [See here](#).



Buy your train tickets in advance: Genève to Selden and Lauchernalp to Genève

Hotel: Berghotel Steinbock, info@steinbock-gasterntal.ch, steinbock-gasterntal.ch, 033 675 1162. Showers & toilets shared.

Transport: train, bus (to **reserve** 033 671 1172) & cable car.

| Station/Stop | Time | Platform | Travel | Comments |
|-----------------------------------|-----------|----------|--------|-------------------------------------|
| Genève | dep 07:42 | 6 | IC 1 | InterCity 1 711 |
| Bern | arr 09:27 | 7 | | Direction: St. Gallen |
| Bern | dep 09:39 | 3 | RE | Regio Express 4165 |
| Kandersteg | arr 10:40 | 1 | | Direction: Domodossola (I) |
| Kandersteg Kandersteg, Bahnhof | | | walk | 3 min. , Y |
| Kandersteg, Bahnhof | dep 10:50 | | B 240 | Bus 240 7 |
| Selden, Gasthaus Steinbock | arr 11:12 | | | Direction: Selden, Hotel Gasterntal |

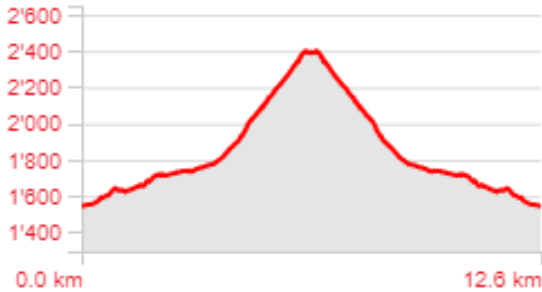
Leader: Bill Larson 079 373 4686; bill_larson@bluewin.ch

Saturday we can drop some things at the hotel. Pack them in a separate bag; there is no time for repacking.

Possible return times: 15:25, 16:25, 17:25, 18:25

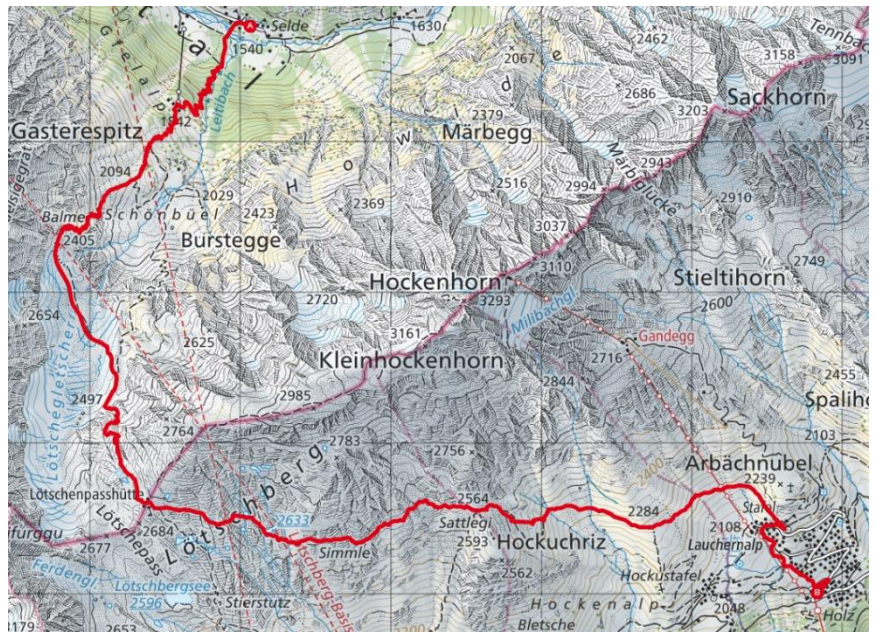
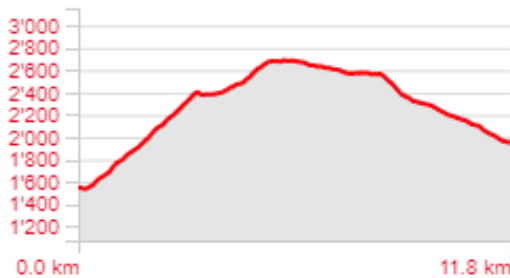
Kanderfirn from Selden

Other
 Date 19.10.2019
 Length 12.62 km
 Ascents/Descents 1'007 m/1'007 m
 Min/max elev. 1'546 m/2'399 m
 Hiking 5 h 15 min



Lötschepass

Other
 Length 11.76 km
 Ascents/Descents 1'241 m/835 m
 Min/max elev. 1'538 m/2'690 m
 Hiking 5 h 25 min



In case of rain:

If the forecast is bad, we will cancel. The Thursday before the hike, Bill will send an email to confirm or cancel.



The hike leader is not a professional guide.

By registering, you agree that you are fit for this level of hike and/or that you have previously participated in a difficult hike with the SCIG. By registering, you confirm that you carry insurance against accidents and mountain rescue, in particular helicopter rescue operations. (See REGA: <https://www.rega.ch/en/home.aspx>) Check with your employer to see if you are properly insured. *The Hike Leader and SCIG disclaim any and all liability for accidents related to this hike.*

In public transport, we will wear masks.