

INTERNATIONAL SKI CLUB OF GENEVA

KANDERFIRN & LÖTSCHEPASS - DIFFICILE

SATURDAY-SUNDAY, SEPTEMBER 26-27

CANTON BERN TO VALAIS

Saturday from Selden we walk up to the Kanderfirn glacier. Sunday from Selden we switchback steeply up meadows to the Lötsche Glacier. We walk a 1 km long trail across this flat, crevasse-free glacier, marked with orange poles. We do easy rock scrambling to the Lötschepass, where we have lunch, surrounded by snow, ice, stones and towering cliffs with excellent views of the high peaks of the Valais Alps. We walk down to Lauchernalp (Huppä) & take a lift down.

Inscription: by email not text to bill_larson@bluewin.ch by September 17

Please pay 100 CHF to my UBS account to reserve your place.

IBAN:CH65 0027 9279 C710 9135 0; please include your NAME and "Kanderfirn".

I need to know:

- Your full name
- Your email address
- Your mobile phone number
- Are you a SCIG member?
- Are you fit enough to walk for 7 hours up 1200 meters at normal speed? What is the most difficult outing you have done recently?



Maximum: 12

participants

Rendezvous: Genève gare 7:30 platform 6 for a 7:42 departure; board the **second car from the back of the train**. Bill will board in Lausanne at 18:18.

To Bring: boots, hat, water, picnic lunch for Saturday, sweater, rain gear, sunscreen, sunglasses, change of clothes, toiletries, masks.

Price 117 CHF for hotel including dinner & breakfast & club fee (plus CHF 20 for non-members) Plus, train tickets 89.20CHF ½ price 165.40CHF full price.

Buy your train tickets in advance: Genève to Selden and Lauchernalp to Genève

Hotel: Berghotel Steinbock, info@steinbock-gasterntal.ch, steinbock-gasterntal.ch, 033 675 1162. Showers & toilets shared.

Transport: train, bus (to **reserve** 033 671 1172) & cable car.

Leader: Bill Larson 079 373 4686; bill_larson@bluewin.ch

Saturday we can drop some things at the hotel. Pack them in a separate bag; there is no time for repacking.

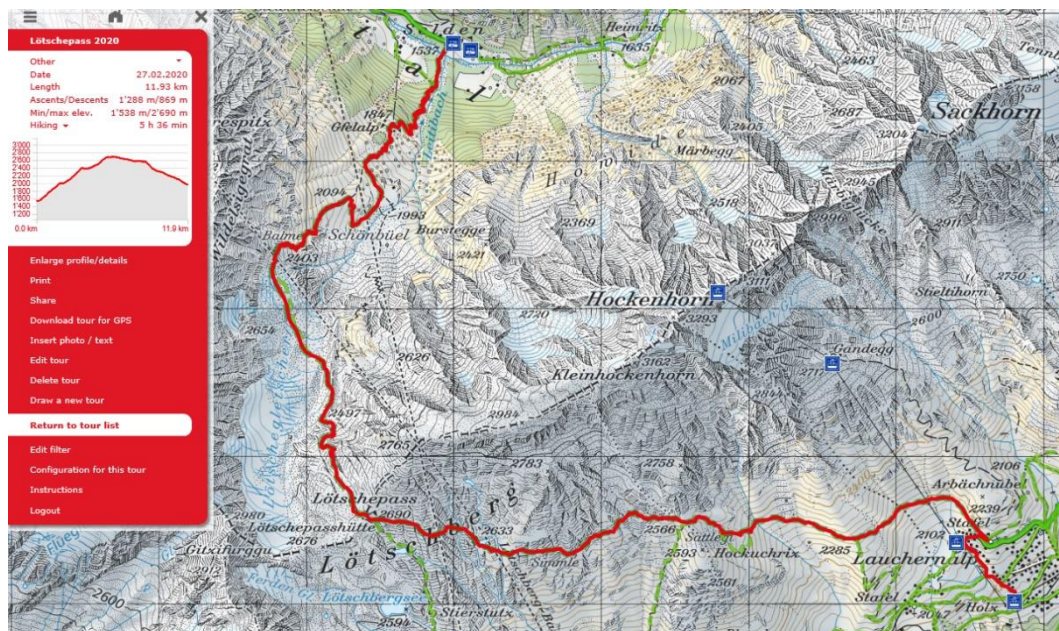
Connections for Sa, 26.09.20

Station/Stop	Time	Platf./ Edge	Travel with	Occupancy	Comments
Genève	dep 07:42	6	IC 1		InterCity 1 711 Direction: St. Gallen ✖ FA BZ R R
Bern	arr 09:26	7			Change
Bern	dep 09:39	3	RE		RegioExpress 4165 Direction: Domodossola (I) FL R
Kandersteg	arr 10:40	1			2 min., Y
Kandersteg, Bahnhof			walk		
Kandersteg, Bahnhof	dep 10:50		B 240		Bus 240 7 Direction: Selden, Hotel Gasterntal Reservation +41 33 671 11 72
Selden, Gasthaus Steinbock	arr 11:12				



Possible return times: 15:25, 16:25, 17:25, 18:25

In case of rain: If the forecast is bad, we will cancel. The Thursday before the hike, Bill will send an email to confirm or cancel.



- By registering, you agree that you are fit for this level of hike and/or that you have previously participated in a difficult hike with the SCIG.
- By registering, you confirm that you carry insurance against accidents and mountain rescue, in particular helicopter rescue operations. (See REGA: <https://www.rega.ch/en/home.aspx>) Check with your employer to see if you are properly insured. *The Hike Leader and SCIG disclaim any and all liability for accidents related to this hike.*
- *In the trains if it is crowded, we will wear masks. During the hike we will maintain 2 meters of distance.*

Station/Stop	Time	Platt./ Edge	Travel with	Occupancy	Comments
Lauchernalp	dep 16:25				Cableway 70 Direction: Wiler (Lötschen) (Talstation)
Wiler (Lötschen) (Talstation)	arr 16:30		LB		
Wiler (Lötschen) (Talstation)					1 min., Y
Wiler (Lötschen), Talstation					
Wiler (Lötschen), Talstation	dep 16:37				Bus 591 59156 Direction: Gampel-Steg, Bahnhof
Gampel-Steg, Bahnhof	arr 17:14		BUS 591		
Gampel-Steg, Bahnhof					2 min., Y
Gampel-Steg					
Gampel-Steg	dep 17:17	3			Regio 6128 Direction: St-Gingolph (Suisse)
Sierre/Siders	arr 17:32	3	R		
Sierre/Siders					
Sierre/Siders	dep 17:50	3			InterRegio 90 1830 Direction: Genève-Aéroport
Genève	arr 19:48	2	IR 90		

Duration: 3:23,

