

INTERNATIONAL SKI CLUB OF GENEVA

SEX ROUGE & PLAINE MORTE - DIFFICILE

SATURDAY-SUNDAY, SEPTEMBER 21-22 - VALAIS

We explore a little-known area in Valais north of the Rhone with great views of the Valais Alps. Saturday from Anzère we ascend Sex Rouge and cross the Col des Eaux Froides then cross some tricky lapiaz to the Rawil Dam and descend by bus to Anzère. Sunday, we ascend from Rawil Dam to the Plaine Morte Glacier and take the lift down.

Inscription: by email to bill_larson@bluewin.ch - deadline September 19

Please pay 80 CHF to my UBS account to reserve your place.
IBAN:CH65 0027 9279 C710 9135 0; please include your **NAME** and **"Sex Rouge"**.

I need to know:

- Your first and last name
 - Your email address
 - Your mobile phone number
 - Are you a SCIG member?
 - Are you fit enough to walk for 7 hours at normal speed?
- What is the most difficult outing you have done recently?



Maximum: 12 participants

Rendezvous: Genève gare at 6:15, track 6; board the second to last car. Bill will board in Nyon at 6:44.



Station/Stop	Time	Platf./ Edge	Travel with	Comments
Genève	dep 06:30	6	IR 90	InterRegio 90 1709 Direction: Brig
Sion	arr 08:23	2		
Sion			walk	4 min. , Y
Sion, poste/gare				
Sion, poste/gare	dep 08:30	E	BUS 351	Bus 351 87070 Direction: Anzère
Anzère	arr 09:07			

We will go to our hotel & drop stuff. Please pack the stuff to drop **in a separate bag**. We do not have time for packing & repacking.

Then take cable car to Pas de Maimbré, nonstop 8:30-16:00

<https://map.wanderland.ch/?lang=en&p=&route=all&layers=Wanderland&bgLayer=pk&logo=yes&season=summer&resolution=10&E=2597147&N=1131791&trackId=5039350>

Sex Rouge Anzère

Other ▼

Length 14.90 km

Ascents/Descents 1'016 m/1'595 m

Min/max elev. 1'778 m/2'892 m

Hiking ▼ 6 h 21 min

Enlarge profile/details

Print

Share

Download tour for GPS

Insert photo / text

Edit tour

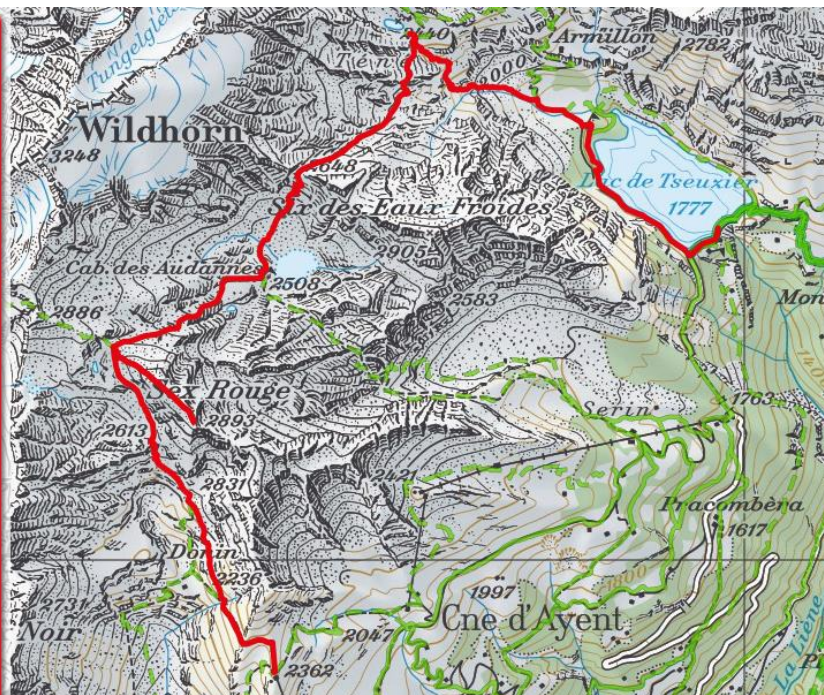
Delete tour

Draw a new tour



Return to tour list

Edit filter

Configuration for this tour





Connections for Sa, 21.09.19

 Anzère, Barrage de Tseuzier	dep 17:00	0:51	0	BUS 426
 Anzère, poste	arr 17:51			

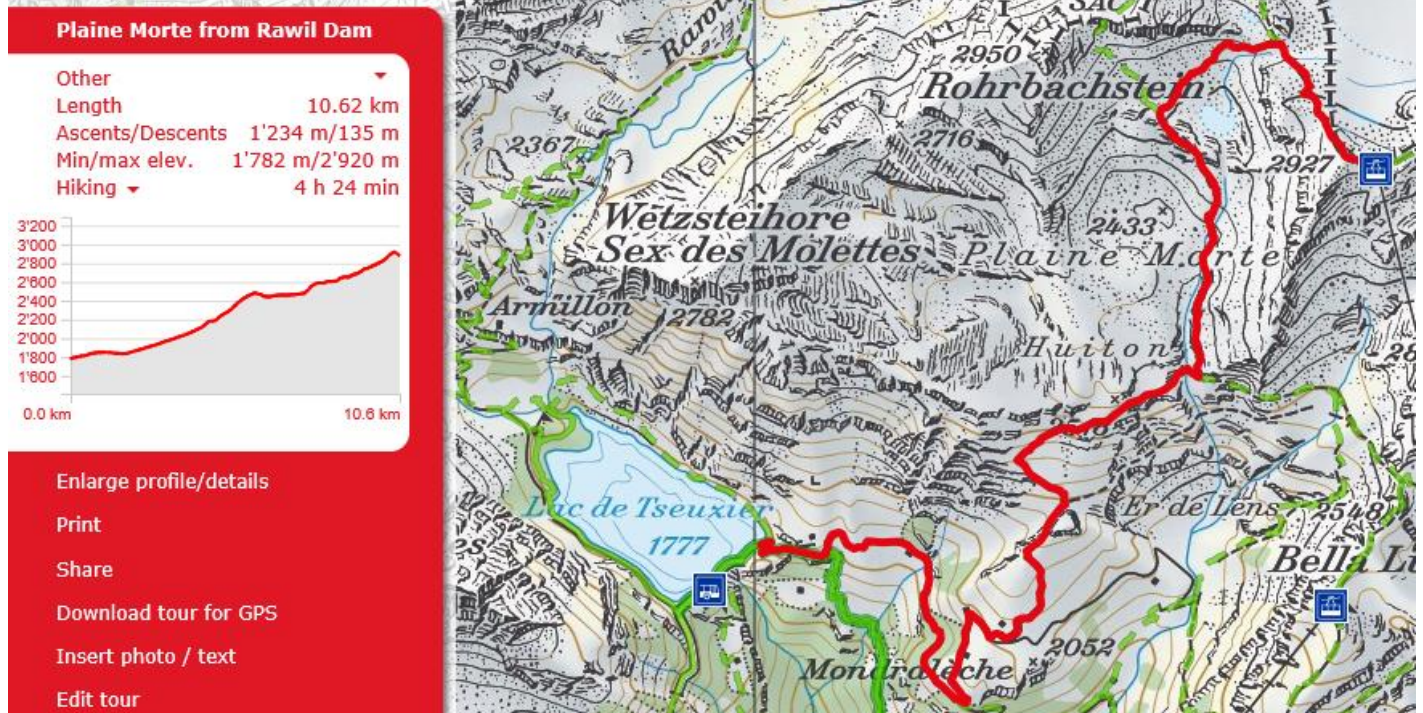
(The only bus)

Sunday

Connections for Su, 22.09.19

 Anzère, poste	dep 08:47	0:51	0	BUS 426
 Anzère, Barrage de Tseuzier	arr 09:38			

<https://map.wanderland.ch/?lang=en&p=&route=all&layers=Wanderland&bgLayer=pk&logo=yes&season=summer&resolution=10&E=2601949&N=1134123&trackId=4806264>



Lift down from Plaine Morte Glacier every half hour. Last descent 16h30.

To Bring: boots, hat, one picnic lunch, water, sweater, rain gear, sunscreen, sunglasses.

Price CHF 10 club tax (CHF 30 for non-members) Plus hotel 84 CHF; Plus train tickets.

Buy your tickets in advance: Genève to Anzère and Montana,

Violettes to Geneva 70.10 CHF demi-abo. 140.20 CHF full price. Plus lifts, plus Tseuzier bus to Anzère

Hotel: Hôtel & Residence Eden Anzère, Route d'Anzère 34, Anzère, 027 399 3100, info@h-eden.ch; <https://www.h-eden.ch/en/>

Transport: train, bus & cable car

Leader: Bill Larson 079 373 4686; bill_larson@bluewin.ch

In case of rain: If the forecast is bad, we will cancel. The Thursday before the hike, Bill will send an email to confirm or cancel.

- **By registering, you agree that you are fit for this level of hike and/or that you have previously participated in a difficult hike with SCIG.**
- **By registering, you confirm that you carry insurance against accidents and mountain rescue, in particular helicopter rescue operations. (See REGA: <https://www.rega.ch/en/home.aspx>) Check with your employer to see if you are properly insured. The Hike Leader and SCIG disclaim any and all liability for accidents related to this hike.**

